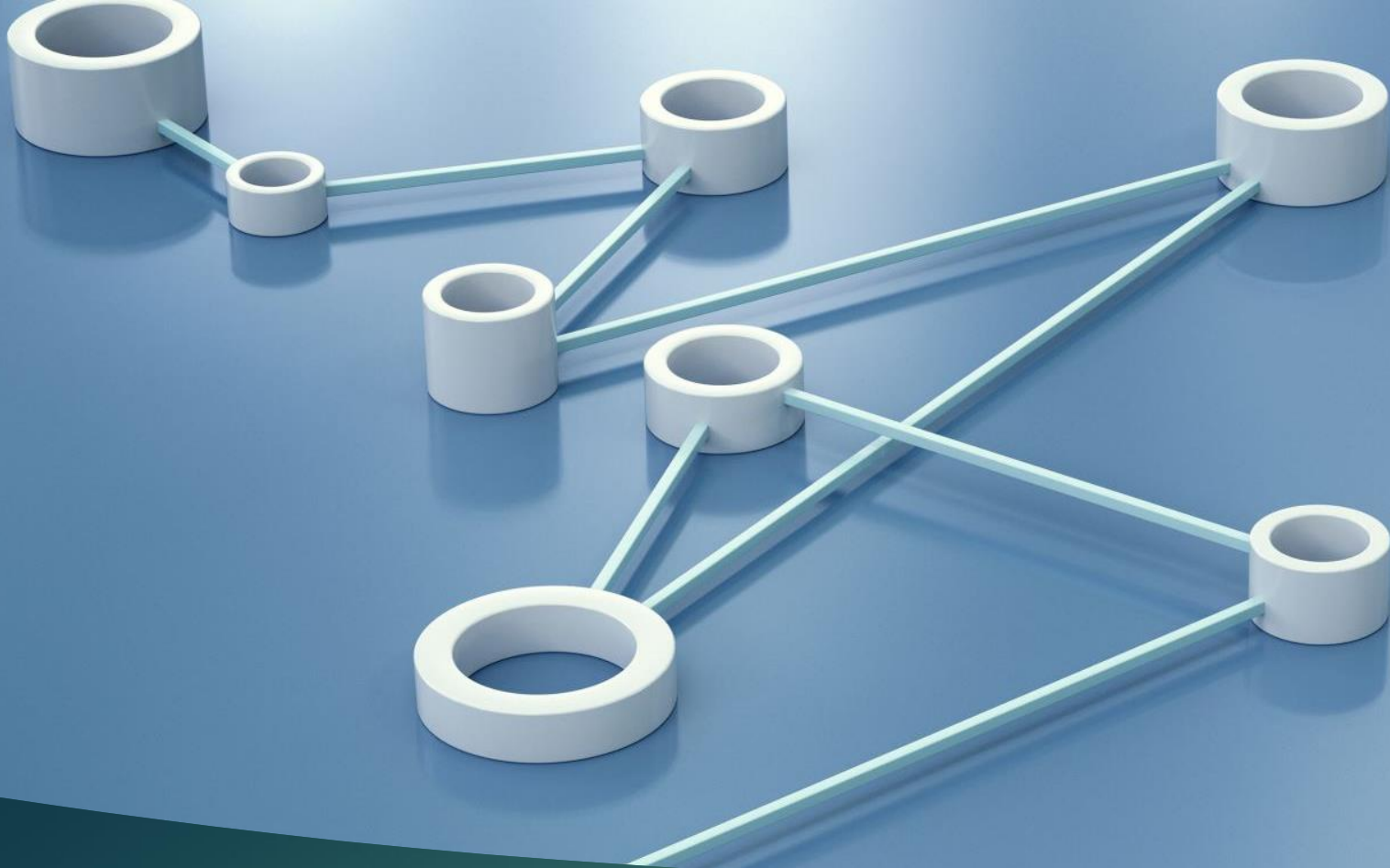




We provide the following services to the mining and exploration industry:

1. **“Farm to Plate” Exploration programme management**
2. **Geological/Structural/Mineralization mapping, assessment and modelling**
3. **Quality Assurance – Quality Control and turn-key compliant exploration**
4. **Training to site crews in compliant exploration, databases and reporting**
5. **Block Modelling, Statistical Analysis, Resource Estimation**
6. **Competent Person Reporting**
7. **Interaction with Mining and Plant Process professionals – the “mining cycle”**
8. **Environmental Awareness**

*...ITS NOT WHAT YOU LOOK AT, ITS  
WHAT YOU SEE*



Exploration track record

# Exploration and Mineral Discovery Footprint



High Success rates through focus on technology, organized work and multistage QC

# Relevant Experience

Year	Country	Commodity	Scope of work
2024	USA	Gold – advanced exploration	CAGE-IN technology implementation and identification of new drill targets and new prospects around Atlanta gold mine, Nevada
2023-2024	Uganda	Nickel – reconnaissance	CAGE-IN study in West Nile region of Uganda to identify and develop Nickel prospects
2024	Canada	Uranium – advanced exploration	Exploration for Uranium in the Elliot Lake area, Ontario and CAGE-IN technology implementation for new Uranium discovery in a well explored area
2023	Morocco	Lead-Copper greenfield	Exploration for Lead-Copper-Silver in Southern Morocco near Tiznit
2022-2023	Congo	Gold – greenfield	Grass roots exploration for gold in Punia area of Eastern DRC
2022-2023	Congo	Tin-COLTAN advanced exploration	Exploration of old mining district of NE Congo in Punia and Kasese areas of Maniema to explore for tin-COLTAN resources and reopening of old mines
2021-2022	Morocco	Lead-Barite process design	Establishing commercial feasibility and plant design for mine tailings reprocessing to recover Pb, Ag and Barite
2021-2022	Uganda	Gold-reconnaissance	Regional prospecting and reconnaissance of gold prospects
2021-2022	Uganda	Tin - greenfield	Regional exploration management of pegmatite hosted tin prospects in Uganda
2020	Congo	Gold and base metals	Field assessment of artisanal mining areas in Eastern Congo with a perspective of consolidating and developing the areas into large mine

# Relevant Experience

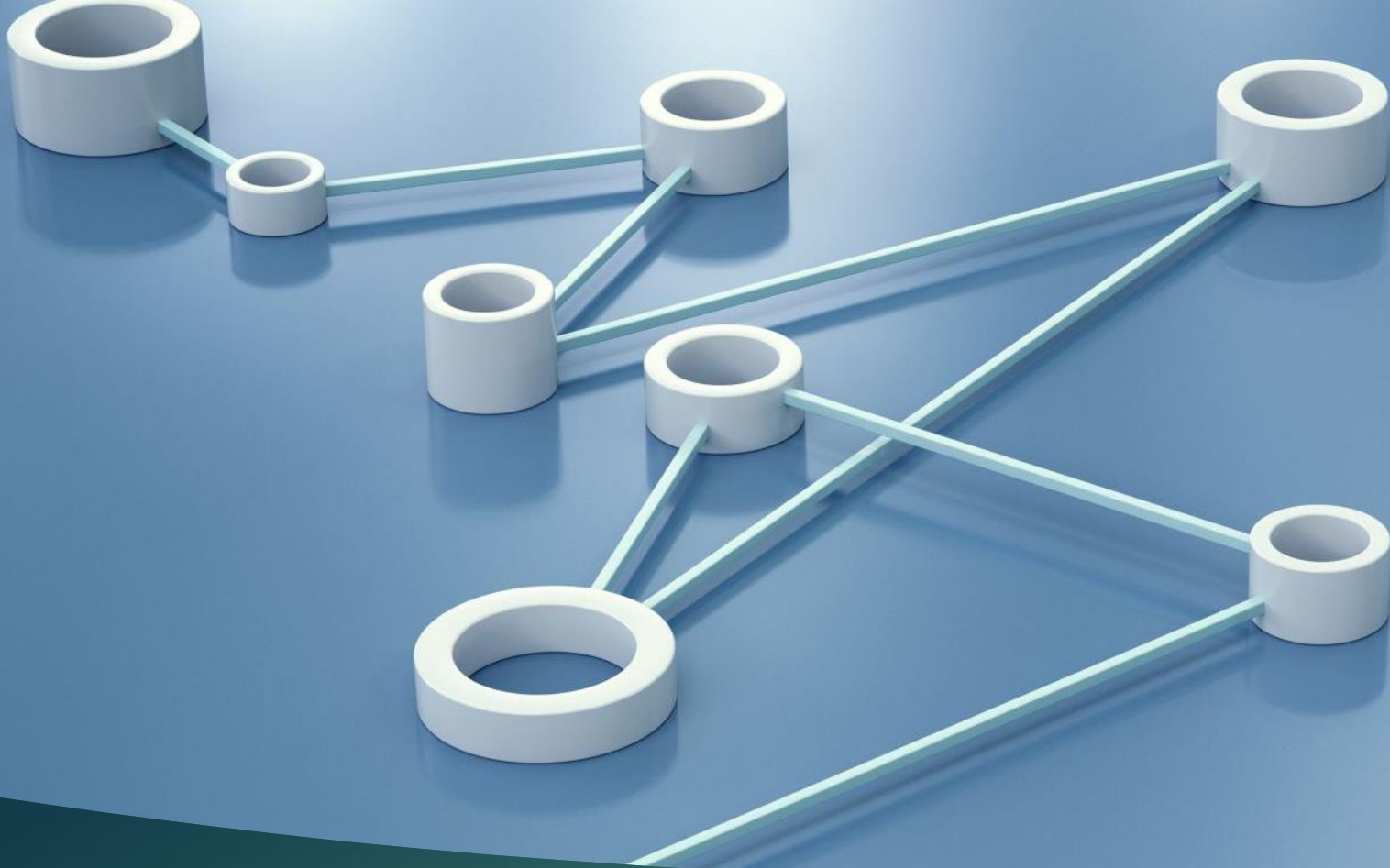
Year	Country	Commodity	Scope of work
2021-2022	Uganda	Nickel – advanced exploration	Regional exploration management of nickel laterite and nickel sulphide prospects in Uganda
2020	Philippines	Gold – desk study assessment	Desk study and assessment of Johson gold mine
2019-2020	Morocco	Gold – advanced exploration	Review of field and drill database, structural controls of gols mineralization with structural modelling. High level technical advice to field team exploring for Gold in Boumaine area for Maya Gold and Silver, Morocco
2019	Guinea	Gold - assessment	Due diligence and assessment of Gold project in Siguiri
2019-2020	French Guyana	Gold – exploration planning	Planning for exploration and reopening of Saint Elie Gold mine
2018-2019	French Guyana	Gold - assessment	Assessment of gold potential in Camp Caiman project
2018-2019	Peru	Gold and base metals – site review and planning	Exploration planning for gold-base metals prospects for a European client in the high lands of Peru in the Condorama – Syukitambo area
2018-2019	Morocco	Base Metals – Due diligence	Assessment and technical due diligence of various small-scale mines for upgradation to large mining projects in Anti-Atlas and High-Atlas of Morocco
2018	UAE	Geotechnical – database	Migration of geotechnical boreholes of Dubai Municipality to a interpretable XML based system
2015-2018	Madagascar	Gold - greenfield	Regional reconnaissance using remote sensing, aerogeophysical data, regional traverses, stream sediment sampling, trenching, drill target identification at Bonara area, Eastern Madagascar.

# Relevant Experience

Year	Country	Commodity	Scope of work
2014-2018	Zambia	Copper, Gold – Assessment and conceptualization	Regional Geological Reconnaissance traverses, Prospect scale Geological mapping, rock chip and trench sampling, drill target delineation, stream sediment sampling, bulk alluvial & colluvial gravel processing and Conceptualization of 1000km long Southern Zambian Copper-Cobalt-Orogenic Gold Belt
2017	UAE	Geological Modelling	Setting up a data processing center to migrate historical drillhole results from Dubai to a digital geological database and prepare geological model of Dubai for geotechnical applications with a team of about 30
2016	DR Congo	Gold, silver - reconnaissance	Reconnaissance of gold prospects and recommending the way forward for exploration along Nyange shear zone high grade gold prospect in eastern DRC
2015-2016	Guyana	Gold – exploration planning	Review internal exploration data, plan and execute additional work required to prepare a compliant NI43-101 and JORC resource report
2015	Mongolia	Copper, Gold – advanced exploration	Planning and execution of Copper - Gold porphyry exploration programme in Altai-Gobi area Mongolia. Including review of existing data, planning of remote sensing, field mapping, sampling programmes, geophysical profiles, data integration in GIS, <b>drill hole planning and spotting, core logging and sampling, structural study in drill core and 3D geological modelling</b> with a team of about 45
2014-2015	Nicaragua	Gold, silver - greenfield	Secure exploration properties, reconnaissance work and prepare exploration plans in Labu, Nicaragua. Locating available properties, negotiate with property concession holders and secure high potential gold exploration properties.
2014	Tanzania	V2O5 Titaniferous Magnetite, limestone, coal - assessment	Review internal exploration data, carried out prospecting for and vanadium bearing titaniferous magnetite deposits, limestone deposits and coal deposits in Maganga Matitu. Planned work required to prepare a compliant JORC resource reporting

# Relevant Experience

Year	Country	Commodity	Scope of work
2013-2014	Guinea	Iron ore, bauxite advanced exploration	Review internal exploration data, recommend additional work required to prepare a compliant resource report. Conduct remote sensing studies for target identification. Supervise ongoing exploration work, prepare drill plan, site drill holes, logging, sampling, establish on site sample preparation lab, integration of drill results in geological database and prepare geological models for NI43-101 report at Forecariah Laterite deposit. Conduct onsite and laboratory beneficiation tests. Team of 80.
2014-2015	Turkey	Zinc, Lead – advanced exploration and structural model	Prepare PREDICTIVE MODELLING of zinc and lead resources to predict location of high grade ore for drill planning using field reconnaissance, detailed mapping, detailed structural geology field observations - surface and underground, underground structural mapping at Horzum-Pinargazu and Akkaya some of the world's highest grade zinc mines
2012	USA	Antimony, Gold – advanced exploration	Data review and exploration of Holly antimony-gold property in Nevada, USA
2009 - 2011	Colombia	Gold, copper – advanced exploration to resource modelling	Property reconnaissance, integration of preexisting data and reports, build team in field, plan and execute drilling program, ensure world class HSE and <b>QA/QC for an NI43-101 compliant exploration program</b> . Complete resource estimates and prepare regular press releases for a TSX listed company. Succeeded in <b>discovering 14Moz Au eq resources in Titiribi. Including over 100,000m of diamond drilling Team of 150.</b>
2007-2008	Niger	Uranium – advanced exploration	Property assessment, exploration planning and execution compilation and assessment of historical databases as old as 1940s, negotiating the largest drilling of 250,000m and exploring the Madaouela Uranium deposit that hosts discovering over 170 Mlb of U <sub>3</sub> O <sub>8</sub> compliant resources



Team

- **Expertise:** Structural controls of mineralization, Orogenic gold, Porphyry Au-Cu, Carbonate replacement Base Metals, Vein hosted Sb-Au, Pegmatite Tin-COLTAN, Sedimentary Uranium, Enriched BIF Iron ore, Layered igneous complex (Ni-PGE), Compliant exploration QA/QC, Lateritic Ni
- **Major mineral discoveries:**
  - **14 Million Oz of Gold eq Gold-Copper porphyry, Colombia**
  - **165+ Mlb of Uranium, Niger**
  - **Multi Billion tonne lateritic iron ore discovery, Guinea**
- **Locations:** Madagascar, Tanzania, India, Niger, Australia, Sierra Leone, USA, Colombia, Peru, Guyana, Nicaragua, Mongolia, Morocco, Kenya, Iran, DRC, Togo, Guinea, French Guyana.
- **Business:** Founder director of GeoExploration LLC (USA), MPXG Exploration Pvt Ltd (India) and Panam Resources (BVI)
- **Management:** Goviex Uranium (Niger); Goviex Gold (Australia), Sunward Resources (Colombia), Condoto Platinum (Colombia), WAI Capital (Guinea), Future Vantage (Mongolia), Blue Stream Enterprises (Mongolia), Sahavola Gold Mines (Madagascar) and EU Gold (Nicaragua), Samta Mines and Minerals (Uganda).



Dr. Amit Tripathi  
Ph.D. Structural Geology

**32 Years in Exploration  
and Research**

- **Expertise:** Orogenic gold, economic geology, feasibility models, grassroots exploration, geological modelling, JORC compliant exploration, drill hole logging and sampling for gold, geological modelling of gold deposits
- **Major mineral discoveries:**
  - **Discovered extensions of Ingaldhal Copper Mines, India**
  - **Discovered +1 Moz Ganajur Gold Deposit, India**
  - **Discovered +1 Moz gold deposit in Jonnagiri, India**
- **Locations:** Explored in **42 countries** for Gold, Copper, Lead, Zinc, Nickel, Magnetite Iron Ore and PGE
- **Business:** Cofounder of Geomysore Service (India); Director of Exploration of the Deccan Gold Mines;
- **Management:** CEO of MPXG Exploration (India); COO of Sahavola Gold Mines (Madagascar); Director Exploration Deccan Gold Mines (India); Asst. Editor of the Journal of the Geological Society of India.



Dr. V.N. Vasudev  
Ph.D. Economic Geology

45 Years in Exploration and Research

- **Expertise:** Mining Geology and Grade Control, Underground exploration, Peripheral exploration, Structural geology, Bauxite and Lateritic Ni, Layered igneous complex Ni-PGE, Copperbelt, Pegmatite Tin-COLTAN, Kimberlite diamond, Compliant exploration and QA/QC, Lithium, Mineral sands,
- **Major mineral discoveries:**
  - **1.5Bt bauxite deposit in Cameroon**
- **Locations:** South Africa, Tanzania, Cameroon, Mali, Uganda, Congo, Burkina, Lesotho, Zambia, Zimbabwe, Guinea, Ethiopia,
- **Business:** Founder, Chris Ainsworth Consulting, South Africa; Shareholder of The Mineral Corporation, South Africa
- **Management:** Principal consultant, MPXG Exploration, India; COO of Enrox Energy and Mining, Mali; Chief Geologist/Mineral Resource Manager, Randgold Resources/ Syama gold mine, Mali; Asst Chief Geologist, JCI/Potgietersrust Platinum, South Africa; Seniro Mine Geologist, JCI/Consolidated Murchison, South Africa.



Chris Ainsworth  
M.Sc. Mineral Exploration

33 Years in Exploration and Mining

- **Expertise:** Technical geoscience, Project management, Independent expert exploration/mining, AIM, AIM+ and 43-101 compliant standards, reporting and certification, QA/QC and sampling protocols, Logging and sampling, Programme safety and design, Geothermal exploration, Orogenic gold, Litho geochemistry of gold Mineralization, Pegmatite Sn-W-COLTAN, MVT base metals, Ni-Laterite
- **Locations of Major mineral deposit evaluation:** Ireland, Tanzania, Ghana, Greenland, Macedonia, Norway, Malawi, Mozambique, Tunisia, Albania, Turkey, Colombia
- **Management:** Principal Consultant, MPXG Exploration, India. Exploration Manager, Samta Mining and Minerals, Uganda. Project Manager, SLR/CSA Group, Ireland, Project Geologist, Lisheen Zn-Pb, Ireland, Assistant Geologist, Geological Survey of Ireland



Roisin Goodman  
B.Sc Geology

36 Years in Exploration and Consulting

# Core Team - Mining

- 1st class mine manager's certificate of Competency, Metalliferrous, (un-restricted) -1984
- Bachelor of Engineering (Mining)-1979, University of Jodhpur, Rajasthan, India
- CESPROMIN-1996, Ecole de mine de Paris, Fontainebleau, France
- Mining Consultant - Recognized Qualified Person for several projects Designing of underground excavations (development & stopes) for mines.
- Seven years in 21000tpm Al Amar mine in Saudi Arabia. Trackless mine having access decline and heavy modern machinery such as, drilling Jumbos, Quasar, DL-420 long hole drilling machines and a fleet of scoop trams of different sizes with matching capacity of 20 tonner trucks. The stoping method is top slicing retreating.
- 24 years in Underground Lead and Zinc mines of HZL in India at various positions as Mining Engineer. Acting Head of Unit. Responsible for mine production and safety of the 500 TPD underground Lead Mine; Mine planning; stope designing; Production scheduling; Head of the Planning department in Rajpura Dariba Mine (3000 TPD Lead & Zinc underground Mine) Responsible for mine planning, stope design, blast hole design, production scheduling De-pillaring operations



A.P.S. Chandi  
Mining Engineer

34 Years in Mining

- **Expertise:** Economic geology, mainly mining exploration, geochemistry, orogenic gold, epithermal gold, porphyry alteration mapping, porphyry Cu-Au and Cu-Mo, IOCG, VMS, Carbonate Replacement Deposits, Layered igneous complexes, Kimberlites, Compliant exploration QA/QC
- **Major Projects:**
  - **El Hito Porphyry**
  - **Imabaoeste, near Llurimagua, Cu-Mo porphyry as Project Manager**
  - **Discovery of Cu-Au porphyry system in Pijilí, Azuay and in Aguas Calientes, Naranjal, Ecuador**
- **Major companies worked for:**
  - **Gold Fields – 6 years**
  - **Rio Tinto – 2 years**
  - **BHP-Billiton-Tintaya – 2 years (as Chief Geologist Ecuador-Peru)**
  - **Bonanza Mining – 3 years**
- **Locations:** Ecuador, Venezuela, Bolivia, Peru, Australia, Chile, Mexico, Panama
- **Management:**
  - Chief Geologist in the Celica-Lancones Basin, Ecuador -Peru
  - Sunstone Metals, Australia in its subsidiary Golden Exploration GoEx S.A. as Project Manager/Coordinator
  - Project Manager, Petaquilla Minerals, Panamá
  - Project Manager and logging trainer for exploration geologists Llurimagua, Cu-Mo porphyry

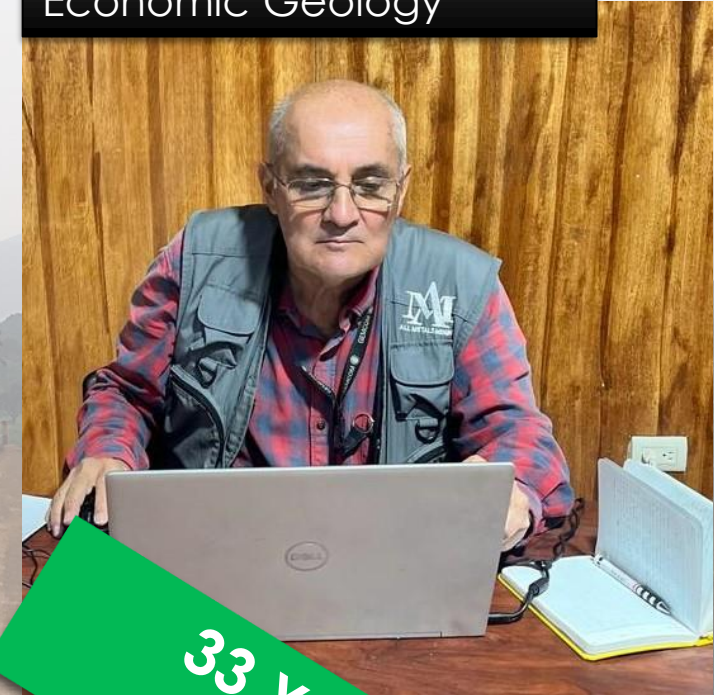
Francisco Dávila  
Economic Geology



**32 Years in Mineral  
Exploration**

- **Expertise:** Economic geology, exploration and evaluation of mineral deposits, epithermal and porphyry systems, mine geology
- **Major mineral discoveries:**
  - **14 Million Oz of Gold eq Gold-Copper porphyry, Colombia**
  - **Project Magdalena, Epithermal gold, Ecuador**
  - **Cerro Verde porphyry, Ecuador**
  - **Huato Porphyry and epithermal system, Ecuador**
  - **San Gerardo Epitharmal prospect, Ecuador**
- **Major companies worked for:**
  - **Sunward Resources, 4 years**
  - **Gold Fields – 6 years**
  - **IAM Gold – 1 years**
  - **Dynasty Metals & Mining – 5 years**
  - **Odin Mining – 4 Years**
- **Locations:** Peru, Colombia, Ecuador, Uruguay, Venezuela, Panama
- **Management:** Director of Geology (Sunward Resources, Colombia), Chief Geologist (Windy Knob Resources, Colombia), Chief Geologist (Dynasty Metals & Mining Inc, Ecuador), Head of Project (IAM Gold, Ecuador), Project Manager (Gold Fields, Ecuador)

Henri Sanchez  
Economic Geology



**33 Years in Mineral Exploration**

- Long experience in various methods of mining exploration for the research including iron, gold, bauxite and base metals
- Certified in Project Management for the Executive Directors of the University of British Columbia
- Developed a strategic leadership experience to assume technical responsibilities and build a long-lasting, professional relationship network.
- Part of the team that has discovered a world class iron ore reserves (2011-2013)
- Supervise drilling program for Simandou pre-feasibility and feasibility studies – Rio Tinto (2005-2011)
- Gold exploration, mapping and geochemical sampling including interpretation of geochemical exploration and drilling data for Ashanti
- Exploration of gold, mapping and geochemical sampling, management of the exploration camp for Cluff (1995-96)



Mamadouba Yansane  
B.Sc. Geology

23 Years in Exploration

- **22 years of exploration experience** in handling geophysical methods for exploration of economical minerals, hydrocarbons, groundwater and geotechnical.
- **Exploration Projects:** for **base metals, gold & PGE** in India and overseas that are geologically potential greenfield and brownfield projects by geophysical methods, processing & interpretation of data such as **Ground magnetic, Time-domain EM, electrical methods and gravity.**
- On-board acquisition QC projects carried for Seismic surveys (offshore 3D OBC) in west coast of India for ONGC; Client side QC for 2D & 3D land seismic survey in Gujarat for GAIL. 2D & 3D seismic data interpretation for few outsourced projects carried for MOGE (Myanmar) and Columbia oil fields.
- Ground magnetic for base metal exploration (Copper) in Tanzania.
- Ground magnetic, Electrical resistivity & SP surveys for gold exploration in Sudan.
- Ground magnetic data processing & interpretation for Nickel exploration in UGANDA & DRC Congo.
- Aeromagnetic data processing & interpretation for gold exploration of carlin type deposit, USA.
- Ground magnetic data processing, modeling and interpretation for magnetite ore exploration, Guinea.
- Limestone exploration by electrical resistivity survey – Republic of Congo



Krishna Prasad  
Msc(Tech) Geophysics

22 Years in Exploration

- GIS, Remote Sensing and Database Manager MPXG Exploration – Tin, COLTAN and Gold exploration project in Eastern DRC
- **GIS Manager at**
  - **Qatar Mining Co (7 yrs),**
  - **Salva Resources (2 yrs),**
  - **De Beers (4 yrs)**
  - **Rio Tinto (2 yrs)**
- **Remote sensing specialist, Muscat, Oman (2 yrs) and Geomysore (1 yr)**
- Expertise in Geospatial & Mineral Exploration Database Management, Spatial Data Analysis, Multi & Hyper Spectral Remote Sensing and image processing, Acquisition & compilation of historical geological data
- Quality assurance, data analysis and interpretation techniques, and integration of data to arrive at exploration planning.
- In-depth knowledge and user proficiency in Geology, GIS & Image processing related software:
  - Maxgeo DataShed, Maxgeo QAQCR, Micromine, ArcGIS, RockWorks, MapInfo AutoCAD Map, Global Mapper, QGIS
  - Image Processing: ENVI, ER Mapper, ERDAS Imagine
  - MS Access, MS SQL Server
- Drillhole and Surface Sample Data Compilation" for a major international mining company. Responsible for designing and implementation of SOP's and QA/QC procedures.



KV Praveen Kumar  
M.Tech. Remote Sensing

19 Years in Exploration

- GIS, Remote Sensing and Database Manager MPXG Exploration – Tin, COLTAN and Gold exploration project in Eastern DRC
- **GIS Manager, Geologist and Geophysics, at**
  - **Samta Group**
  - **SRK Consulting**
  - **IIT (BHU)**
  - **Rolta Limited**
  - **MSPL Ltd**
  - **Infotech**
- **Geological, Geophysics, Remote sensing and GIS specialist 12 years**
- Expertise in Geological, Geophysical, Geospatial, and Mineral Exploration Database Management, Multi & Hyper Spectral Remote Sensing and image processing, Acquisition & compilation of historical geological data
- Quality assurance, data analysis and interpretation techniques, and integration of data to arrive at exploration planning.
- In-depth knowledge and user proficiency in Geology, Geophysics, GIS & Image processing related software:
  - Surpac, Geosoft, Montaj Oasis, ArcGIS, DataShed, Micromine, Rockworks, MapInfo, ERDAS Imagine, ENVI, QGIS, Global Mapper
  - Image Processing: ERDAS Imagine, Zond IP, ENVI and ER Mapper
  - MS Access, MS SQL Server
  - Python, MATLAB and Fortran
- Drillhole and Surface Sample Data Compilation" for a major international mining company. Responsible for designing and implementation of SOP's and QA/QC procedures.



Dr Vikas Srivastava  
Ph.D. Remote Sensing and GIS

14 Years in Exploration

- Project Manager MPXG Exploration, **Tin, COLTAN and Gold** prospect in Eastern DRC
- **Gold exploration in Dieu Merci**, French Guyana
- Exploration site manager for Goviex Uranium 2008-2015  
**discovered 165+ Mlb U3O8 in Niger**
- Supervised over 250,000m of drilling in Madaouela, Niger
- Evaluation of Ni-Laterite
- Consulting geologist for Uranium
  - Miriam Uranium Deposit
  - Ministry of Mines, Niger
- Project due diligence for Ivanhoe Petroleum in Niger
- EIA Validation of extractive industries



Ibrahim Aouami  
M.Sc. Geology

17 Years in Exploration

- Drill rig management, logging, sampling, reconciliation of QAQC for drilling, logging, sampling and laboratory data, bias teasing, compositing, Resources Modelling (Surpac)
- **Major Companies worked for:**
  - **Alphamin Bisie (2 yrs),**
  - **Anvil Mining (1 yr)**
- In-depth knowledge and user proficiency in Geology, GIS & Image processing related software:
  - ArcGIS, QGIS, MapInfo QGIS
  - Image Processing: ENVI, ER Mapper, ERDAS Imagine
  - MS Access, MS SQL Server
  - Mining: Minesched, Deswick, Whittle, Datamine, Snowden Supervisor, Modular, Minesight and AutoCad
- Drillhole and Surface Sample Data Compilation" for a major international mining company. Responsible for designing and implementation of SOP's and QA/QC procedures.

Daniel Nzomba  
Database and Modelling



6 Years in database  
and modelling

- **Worked in Uranium, Manganese, Coal, Clay, Iron ore, Lime stone, Bauxite, Lithium, Diamond, Gold, Granite.**
- **Discovered two new ore mineralization's during sampling program for Gold in Madagascar**
- Worked for greenfield gold exploration in Uganda
- Rough diamond evaluation and grading expert
- Alluvial sampling for diamonds- Pit sampling and plant operations
- QC sorting of the X-ray and grease table sorted sample for accuracy
- Drilling supervision and Core logging
- Sorting and grading for diamonds from the core samples
- Exploration Database management expertise
- Computer Hardware Diploma and AutoCAD.
- Expertise knowledge in MapInfo and Mapinfo Discover for geochemistry analysis and drilling data plotting and interpretation, ArcGIS, Maxi Thermal for Lithium software, Geosoft Oasis montaj



N. Ganesh  
M.Sc Earth Science

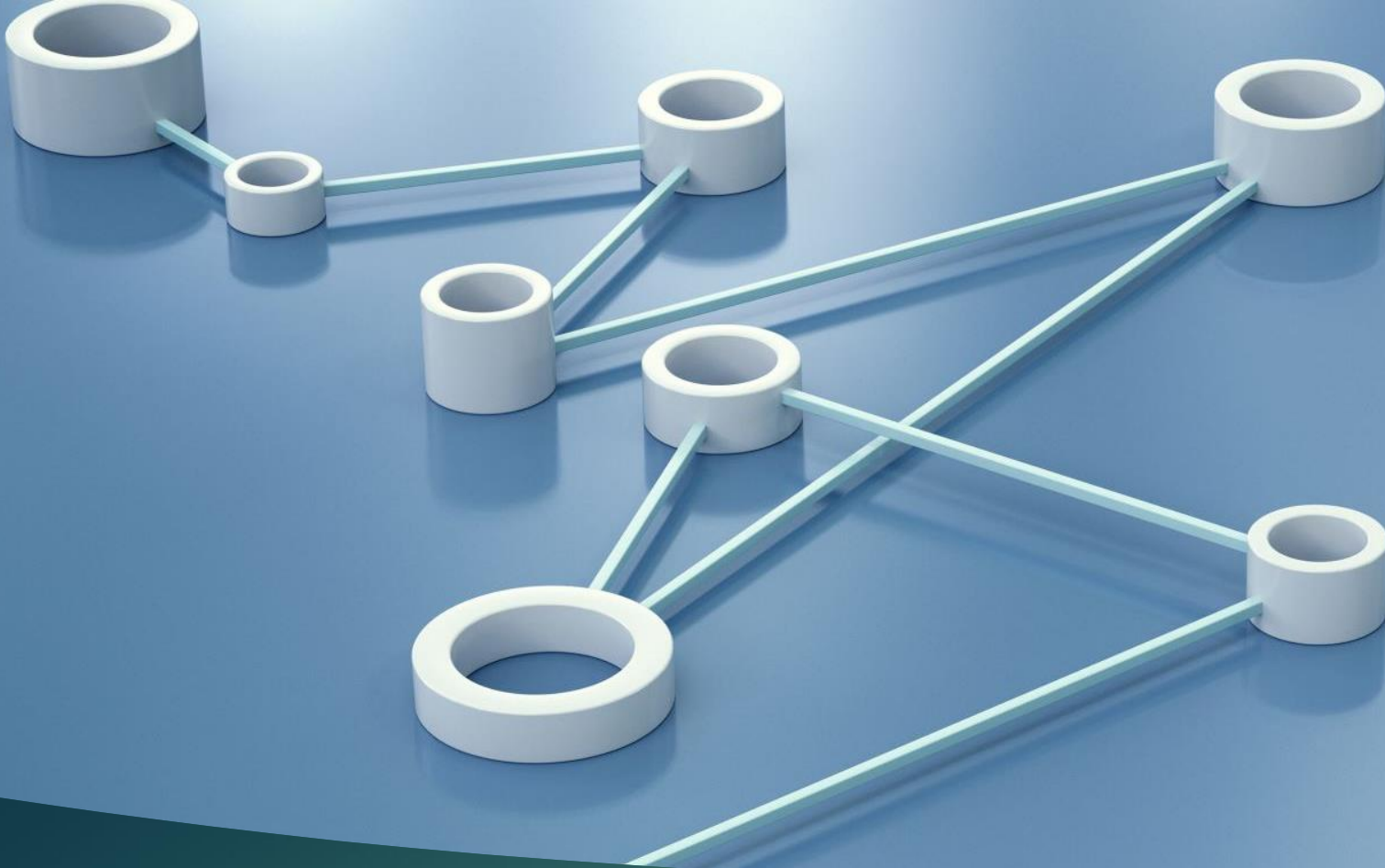
11 Years in Exploration

- Structural Geologist, currently Project Geologist for MPXG Exploration – Tin, COLTAN and Gold exploration project in Eastern DRC
- Detailed mapping and structural analysis:
  - Pegmatite hosted Tin mineralization in SW Uganda
  - Structural controls on mineralization in Mitooma Pegmatite, SW Uganda
  - **Gold exploration Hoima District, Uganda**
  - **Gold and base metals exploration at Access Mining, Uganda**
  - **Resource estimate of secondary gold and grade control Wanga, Giro and Pimbo projects, DRC**
- **Gold Exploration and mining control** project geologist Penge and Magampi gold exploration, DRC
- **Brownfield exploration and mining development Ashanti Goldfields Kilo, DRC including drill planning, logging, sampling, modelling**
- Sampling and drill targeting for gold exploration for Jindal Minerals, Banalia, DRC



Niki Kiza Oliver  
M.Sc Geology

10 Years in Exploration



# Capabilities and Proprietary Technologies

## *Technology centric environmentally responsible exploration*

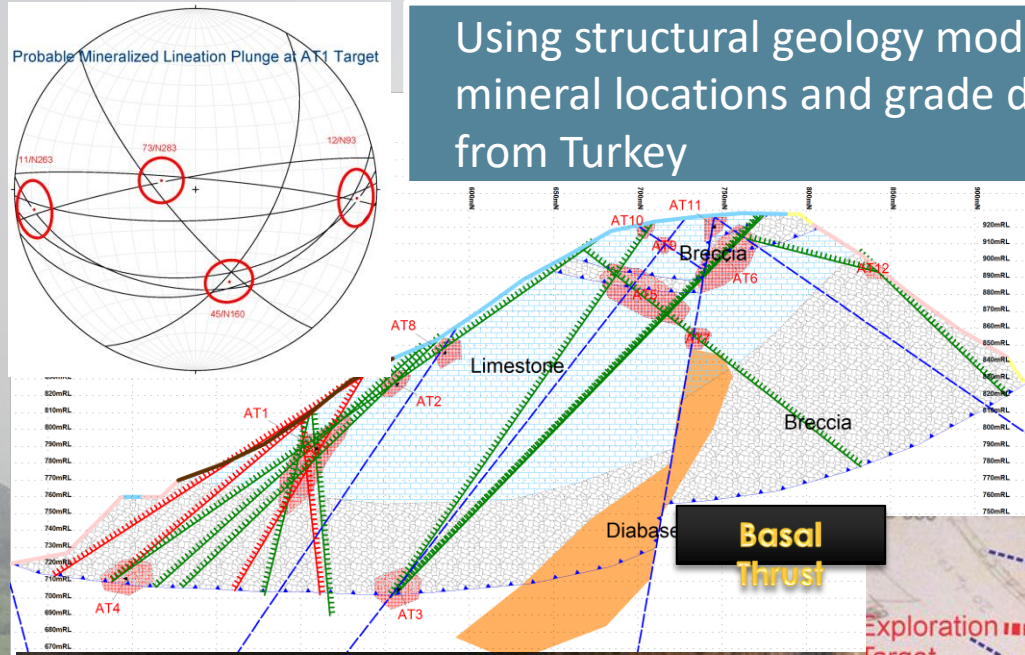
- *Remote sensing*
- *Structure focus mapping and sampling*
- *GIS – Exploration data integration*

## *Proprietary Cutting edge exploration technologies:*

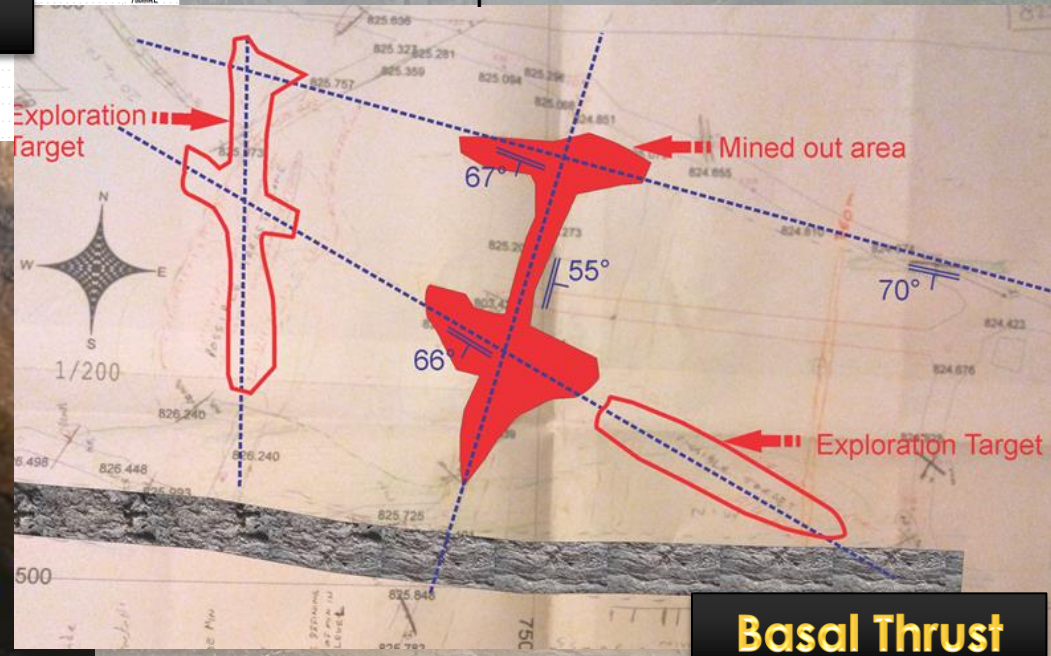
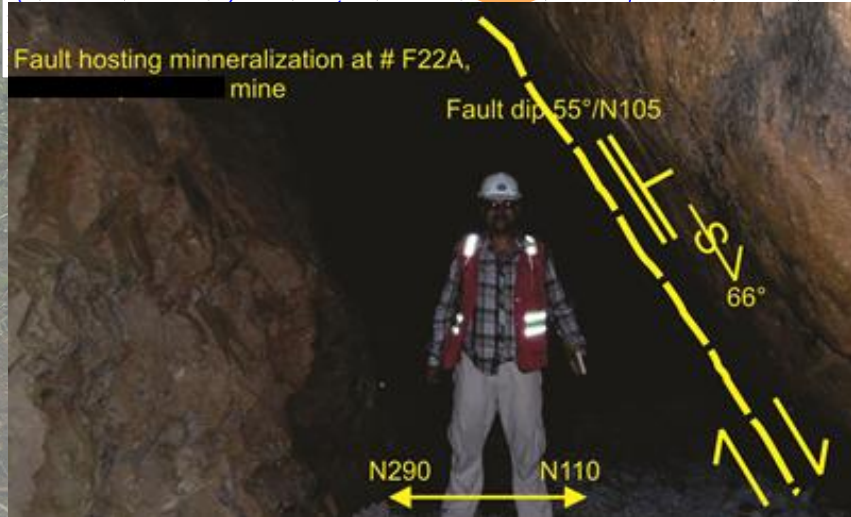
- *CAGE-IN – geophysics-geology data integration*
- *Gold proxy index*
- *Error free exploration databases*
- *Structural modelling*

- Remote sensing interpretation in
  - Geological and Structural mapping
  - GIS integration and interpretation
  - Prospect identification
- Regional reconnaissance
- Field mapping, sampling
- Drill hole planning, logging, sampling
- Identification of mineral deposits
- Prospect identification and evaluation
- Mineral target testing and modelling
- Economic evaluation of deposits
- Compliant exploration (JORC/ NI43-101)
- Reviving old mines with new technology
- High level of safety awareness and training

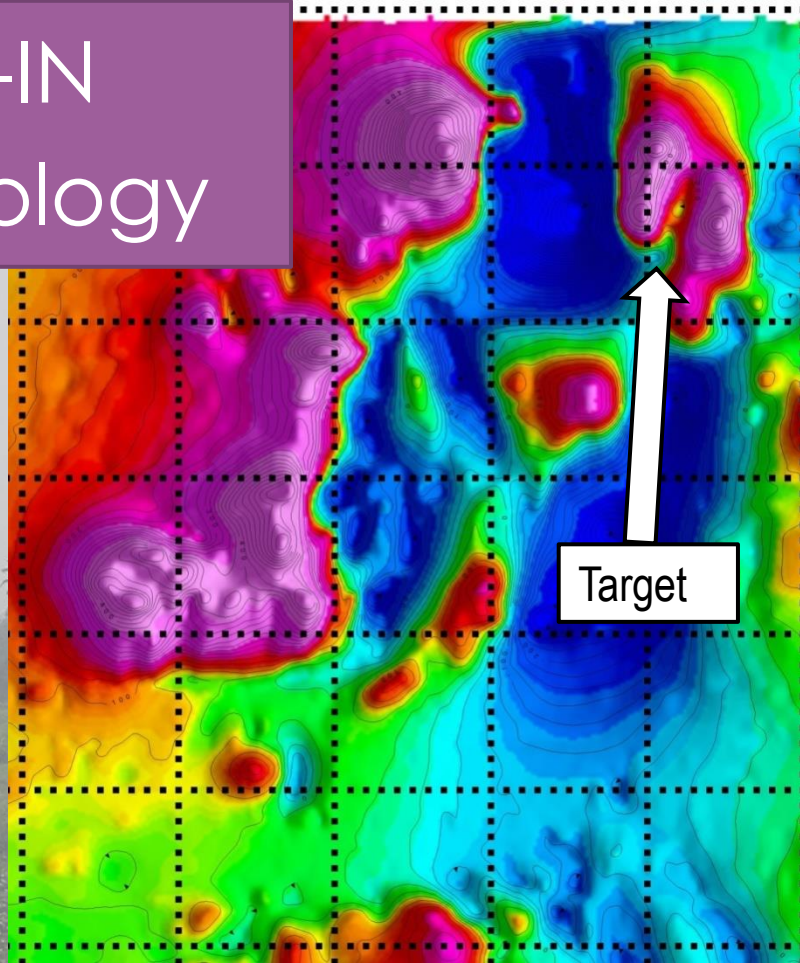
Using structural geology modelling our methodology can **PREDICT** mineral locations and grade distribution in a deposit – A CASE STUDY from Turkey



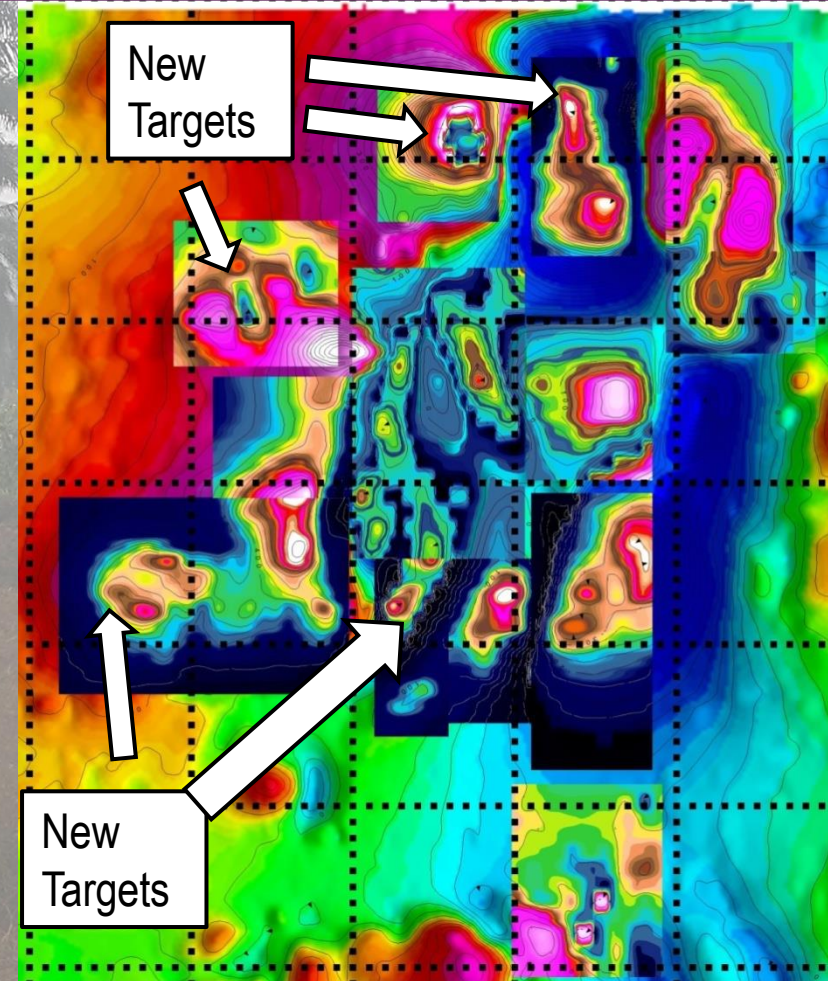
Controls of mineralization along intersection of structures and strategies for their exploration



# CAGE-IN technology



Drilled and proved that CAGE-IN  
identified targets were porphyries



Enhanced high density TMI  
CAGE-IN technology is able to  
identify multiple potential targets

- Detailed exploration – Tin / COLTAN, Nickel, Base Metals, Gold, Diamonds, Iron Ore, Manganese in Africa, South America, Asia, Australia, USA
- Mine waste and tailings reprocessing – Lead, Silver, Bartite – Morocco
- Regional assessment and prospect identification
- Geological and structural mapping
- Regional mapping and prospect identification using remote sensing and field traverses
- Structural controls of mineralization
- Drill optimization with structural, geochemical and geophysical data integration

# MPXG Exploration - Expertise at a glance



Malachite boulder - Congo



Finding Gold - Nicaragua



Drilling for Uranium - Niger



Reconnaissance Gold - DRC



Gold nugget - Colombia